



St Leonard's CE First School - HEALTH & SAFETY

COVID-19 School Re-opening Risk Assessment

Location / Site	ST LEONARD'S FIRST SCHOOL
Activity / Procedure	FULL RE-OPENING of school March 2021
Assessment date	24 th February 2021
Assessment serial number	COVIDRA8

Identify people at risk	YES or NO
Employees	YES
Children	YES
Visitors	YES (Only visitors if absolutely necessary).
Contractors	YES (only if absolutely necessary)

Government guidance states for schools states:

Employers have a legal duty to protect people from harm. This includes taking reasonable steps to protect staff, pupils and others from coronavirus (COVID-19) within your school. You must implement sensible and proportionate control measures which follow the health and safety hierarchy of controls to reduce the risk to the lowest reasonably practicable level.

You must regularly review and update your risk assessments - treating them as 'living documents' - as the circumstances at your school and the public health advice 7 changes.

We know that the predominant new variant of coronavirus (COVID-19) is more transmissible however, PHE advice remains that the way to control this virus is with the system of controls, even with the current new variants.

Prevention

You must always:

- 1) Minimise contact with individuals who are required to self-isolate by ensuring they do not attend the school.
- 2) Ensure face coverings are used in recommended circumstances.
- 3) Ensure everyone is advised to clean their hands thoroughly and more often than usual. 8
- 4) Ensure good respiratory hygiene for everyone by promoting the 'catch it, bin it, kill it' approach.
- 5) Maintain enhanced cleaning, including cleaning frequently touched surfaces often, using standard products such as detergents.
- 6) Consider how to minimise contact across the site and maintain social distancing wherever possible.
- 7) Keep occupied spaces well ventilated.

In specific circumstances:

- 8) Ensure individuals wear the appropriate personal protective equipment (PPE) where necessary.
- 9) Promote and engage in asymptomatic testing, where available.



St Leonard's CE First School - HEALTH & SAFETY

Response to any infection

You must always:

- 10) Promote and engage with the NHS Test and Trace process.
- 11) Manage and report confirmed cases of coronavirus (COVID-19) amongst the school community.
- 12) Contain any outbreak by following local health protection team advice.

<u>Identify hazard</u>			
Lack of social distancing in the classroom resulting in direct transmission of the virus			
<u>Existing level of risk</u>			
HIGH	MEDIUM	LOW	NEGLIGIBLE
<u>Control measures</u>			
6 – Minimise contact between individuals and implement social distancing where possible.			
<ol style="list-style-type: none"> 1. One bubble now operating as one to support pupil well-being and staffing available. Same lunchtime but individual facing forward tables and ventilation. 2. Y1-4 to be allocated their own classroom desk facing forward. 3. Remove excess furniture to increase space if space to do so. 4. Staff strongly advised to wear visors/ masks when teaching until infection rates decrease. 5. Children move away from their desks with teacher permission only. 6. Social distancing golden rules created for and with the children – (Include instructions how to line up, use of toilet, moving around the classroom, no touching etc) 7. Rules re-visited and modelled many times a day and linked to school behaviour system – lots of praise for adherence. 8. Children spoken to about the importance of social distancing if they cannot adhere to rules. 9. Timetable altered to meet requirements and minimise movement around the school. 10. Pairings and group work to be carried out after being risk assessed with member of staff wearing a visor or using a sneeze screen. 11. Verbal feedback using large whiteboard and interactive whiteboard not close interaction. 12. Consistent teacher/ teaching assistant where possible. Separate risk assessment for visiting teachers. 13. Classes of children mix only outdoors and in a large space with adequate ventilation). 14. Y3-4 Bags kept under children's tables, coats on pegs to avoid tripping hazards. 15. Y1-2 Bags and coats on pegs spaced out. 16. EYFS – coats and bags in named containers. 17. No lunchboxes and water bottles to be brought to school. 18. Pupils to have cups for water washed daily in dishwasher. Water poured by adults only. 			
<u>Remaining level of risk</u>		Consider level of risk following use of control measures	



St Leonard's CE First School - HEALTH & SAFETY

HIGH	MEDIUM 24/02/21	LOW	NEGLIGIBLE
------	---------------------------	-----	------------

Identify hazard			
Lack of social distancing using toilets and poor hygiene resulting in direct and indirect transmission of the virus			
Existing level of risk			
HIGH	MEDIUM	LOW	NEGLIGIBLE
Control measures			
5 – Enhanced cleaning Regime			
<ol style="list-style-type: none"> 1. Allocated toilets for different groups of children (only one child at a time). 2. Supervision to toilet until children used to the rules. 3. Hand gel used after toilet use and on return to the classroom or hall as well as washing hands 4. Extra Signs in toilet re washing hands 5. Wedges for the toilet external toilet doors if not fire doors. 6. Extra soap ordered to ensure we do not run out. 7. Hand washing lessons/ reminders. 8. Toilets to be cleaned throughout the day on a staff rota basis. 9. In EYFS children queuing to go to the toilet do so at the classroom door, leaving the wet area clear for distancing. 			
Remaining level of risk		Consider level of risk following use of control measures	
HIGH	MEDIUM 24/02/21	LOW	NEGLIGIBLE

Identify hazard			
Lack of social distancing waiting to enter and exit school resulting in direct transmission of the virus			
Existing level of risk			
HIGH	MEDIUM	LOW	NEGLIGIBLE
Control measures			
6 – Minimise contact with individuals.			
<ol style="list-style-type: none"> 1. Markers outside for the children and parents to wait – more than 2 metres apart as more than one person (main entrance only for staff). 2. Staggered drop off and pick up times for different year groups and families with times adapted to ease congestion) 			



St Leonard's CE First School - HEALTH & SAFETY

3. All children to use one entrance to ensure that least members of staff have contact with parents.
4. Face coverings (adults) requested when in school when dropping off and picking up.
5. Instructions shared re social distancing between families in the morning with parents and children
6. Signage for parents and children displayed outside the classroom. No one to enter school who is displaying COVID-19 symptoms
7. Children accompanied to school by one adult.
8. Member of staff to be on duty to supervise – measures to be enforced.
9. One way system up to and out of the school.
10. Parents to hold hands of children.
11. Parents to use the office to communicate with staff.
12. Accident forms to be scanned to parents to inform them what has happened during the school day.
13. Exit through main gate to be re-introduced to ease congestion at the smaller gate.
14. Temperatures of pupils to be taken inside the school to speed up drop off and ease congestion.

Remaining level of risk		Consider level of risk following use of control measures	
HIGH	MEDIUM	LOW 24/02/21	NEGLIGIBLE

<u>Identify hazard</u>			
Lack of social distancing during playtimes and lunchtimes resulting in direct transmission of the virus			
Existing level of risk			
HIGH	MEDIUM	LOW	NEGLIGIBLE
<u>Control measures</u>			
<u>6-minimise contact with individuals</u>			
<ol style="list-style-type: none"> 1. Tubs of playtime equipment cleaned at the end of each week. One tub cleaned each day. 2. Allocated areas - 2m areas marked out in the playground area to support distancing. 3. One side of lunchtime tables to be used to allow children to face forwards. 4. Staff supervision throughout – actively encouraging and insisting on social distancing as ‘no touching’. 5. Children needing first aid to be accompanied into school by another child. 6. Staff on duty to use their own knife and fork if needed to cut up children’s food. 7. Meals to be dished out to the children. Children stay in their seats. 8. Seating plan for lunches. 			
Remaining level of risk		Consider level of risk following use of control measures	
HIGH	MEDIUM	LOW 24/02/21	NEGLIGIBLE

<u>Identify hazard</u>



St Leonard's CE First School - HEALTH & SAFETY

Lack of social distancing when eating lunch resulting in direct transmission of the virus			
Existing level of risk			
HIGH	MEDIUM	LOW	NEGLIGIBLE
<u>Control measures</u>			
<ol style="list-style-type: none"> 1. Children to be supervised washing hands thoroughly before eating. 2. Hand sanitiser to be used in addition to hand washing. 3. One bubble group eating on separate tables, facing forward.) 4. Children to sit on one side of the lunchtime tables facing forwards. 5. No lunchboxes to be bought, carrier bags only. School lunches encouraged. 6. Meals brought to children's seats in the hall to decrease movement. 7. All lunchtime staff to be trained in full school procedures. 			
Remaining level of risk		Consider level of risk following use of control measures	
HIGH	MEDIUM	LOW 24/02/21	NEGLIGIBLE

<u>Identify hazard</u>			
Lack of social distancing in the corridors resulting in direct transmission of the virus			
Existing level of risk			
HIGH	MEDIUM	LOW	NEGLIGIBLE
<u>Control measures</u>			
<u>6 Minimise contact between individuals</u>			
<ol style="list-style-type: none"> 1. One child going to toilet at one time 2. Messages to office via walkie-talkies (office manager to allocate these in the morning to staff). 3. Staff use empty classrooms and alcoves to maximise the distance between each other 4. Agree instructions with children concerning going and returning to toilet 5. When moving class around the school insist distance is maintained. 			
Remaining level of risk		Consider level of risk following use of control measures	
HIGH	MEDIUM	LOW 24/02/21	NEGLIGIBLE

<u>Identify hazard</u>



St Leonard's CE First School - HEALTH & SAFETY

Contact of shared resources resulting in indirect transmission of the virus			
Existing level of risk			
HIGH	MEDIUM	LOW	NEGLIGIBLE
<u>Control measures</u> 3 – Regular hand washing 5 – Enhanced cleaning regime			
<ol style="list-style-type: none"> Children to be given packs of stationary labelled with their name on. Tubs of resources for individuals if needed – maths cubes etc Resources washed in Milton each night and left to dry if not same person using them the next day Tables, door handles and other surfaces cleaned with Milton every night and throughout the day. Lessons planned where possible so resources are individual and not shared – or on white board Resources on tables ready for lesson and not distributed within the lesson Plastic packets (zippy) bags used for individual resources Children encouraged to wash hands / use hand gel before lessons and after each lesson Minimal items taken to and from home by children. School bags can be used. Reading books and diaries can be used. Staff to wash their hands before and after touching. 			
Remaining level of risk		Consider level of risk following use of control measures	
HIGH	MEDIUM 24/02/21	LOW	NEGLIGIBLE

<u>Identify hazard</u>			
Emotional distress of the children			
Existing level of risk			
HIGH	MEDIUM	LOW	NEGLIGIBLE
<u>Control measures</u>			
<ol style="list-style-type: none"> Children to have consistent staffing where possible. Adapted curriculum (outdoors where possible) to be delivered for as long as is needed to support children's well-being – slowly increasing the cognitive load PSHE Curriculum to be given more of the timetable. Teaching resources from well-being services used for lesson material. Staff to carry out training related to well-being. Mindfulness activities, Drawing and talking and Lego therapy to be used where needed. Resources shared with parents to use to explain new ways of working. Staff PPE to be as child friendly as possible. Telephone calls home for anxious parents and children. Breakfast club for working parents. After school club to resume when full staffing is 			



St Leonard's CE First School - HEALTH & SAFETY

resumed.

10. Pick up and start times to support families.
11. Whole school bubble to allow for siblings to comfort each other throughout the day.
12. Additional PE sessions to support well-being.
13. Positive mental health journals to be used to support pupil well-being.

Remaining level of risk		Consider level of risk following use of control measures	
HIGH	MEDIUM 24/02/21	LOW	NEGLIGIBLE

Identify hazard			
Emotional distress of the staff – including anxiety			
Existing level of risk			
HIGH	MEDIUM	LOW	NEGLIGIBLE
Control measures			
<ol style="list-style-type: none"> 1. Staff survey and Inclusion in risk assessment process – input into hazard identification and control measures. 2. Staff meeting to discuss concerns and shared control measures. 3. Sharing of support helplines – HCC and others 4. Risk assessments reviewed after day one, week one and fortnightly after that. 5. Separate risk assessment for the office area 6. Additional planned time for planning and preparation within the week. 7. Website to be used as a hub of resources to support well-being. 8. Weekly staff meeting to share Health and Safety concerns. 9. Remote Learning policy designed to reduce teacher workload when they are in school supporting isolating pupils. 10. Breakfast Club for staff in addition to children. 11. Adaptation of timetable to allow teachers to complete the tasks that will be most important to support pupils. 			
Remaining level of risk		Consider level of risk following use of control measures	
HIGH	MEDIUM 24/02/21	LOW	NEGLIGIBLE

Identify hazard
Risk of spreading virus due to close contact with children – 1:1 and restraint (including administering First Aid) resulting in direct transmission of the virus



St Leonard's CE First School - HEALTH & SAFETY

Existing level of risk			
HIGH	MEDIUM	LOW	NEGLIGIBLE
Control measures 7 – Where necessary wear PPE			
<ol style="list-style-type: none"> 1. Seek expert guidance from special schools re support for children with behaviour difficulties – that might need restraint and display spitting, biting etc. Leading to individual risk assessments 2. Disposable masks available (all staff to wear masks, visors, gloves and disposable apron when carrying out first aid, cleaning duties or having contact with parents and visitors) 3. Disposable aprons available 4. Extra gloves available 5. Staff allocated work uniform to wear, fresh uniform each day changed in school. 6. Reduced timetable / exclusion / inclusion considered if necessary if children are acting in a way staff are put at risk <p>Pls note the Government guidance states “Wearing face coverings or face masks is not recommended”</p>			
Remaining level of risk		Consider level of risk following use of control measures	
HIGH	MEDIUM 24/02/21	LOW	NEGLIGIBLE

Identify hazard			
Risk of spreading virus due to poor hygiene resulting in indirect transmission of the virus			
Existing level of risk			
HIGH	MEDIUM	LOW	NEGLIGIBLE
Control measures 3-Cleaning of hands 4-Respiratory Hygiene 5-Enhanced cleaning regime.			
<ol style="list-style-type: none"> 1. Hand gel dispenser inside classroom and all other rooms in the school. 2. Hand gel order in large quantities 3. Extra soap dispensers and re-fills in each classroom 4. Washing hands to be placed into the timetable. Children hand wash or hand gel on entry to school, before break, after break, before lunch, after lunch, leaving school, using the toilet and any time they cough or sneeze 5. Personal tissues to be available for each child, to be thrown away immediately when used. ('catch it, bin it, kill it' motto) 6. Bin with lid to be available and emptied at the end of the day or more often if needed. 7. Washing hands posters replaced in all washing areas 8. Reminders how to wash hands properly – videos and posters 9. Procedure agreed for children to wash hands so thorough hand washing 10. Doors around school to be propped open (unless Fire exits). 			



St Leonard's CE First School - HEALTH & SAFETY

11. Windows to be opened for ventilation (to be done at break times when the children are out of the room during cold winter weather).
12. Children to attend school in the uniform required for that day.
13. Daily and weekly cleaning regimes.
14. Additional hand washing portable stations to be used. Mop for spillages to be kept close by, cleaning and emptying of these at the end of each day.

Remaining level of risk		Consider level of risk following use of control measures	
HIGH	MEDIUM	LOW 24/02/21	NEGLIGIBLE

<u>Identify hazard</u>			
Risk of infection due to lack of cleaning resulting in indirect transmission of the virus			
<u>Existing level of risk</u>			
HIGH	MEDIUM	LOW	NEGLIGIBLE
<u>Control measures</u>			
5- Enhanced cleaning regime			
<ol style="list-style-type: none"> 1. All surfaces, handles, shared equipment will be cleaned throughout the day at break times, and afternoons by school staff using Milton. Toilets will be cleaned 2 times each day. 2. PPE will be worn by all cleaning staff 3. Some resources will be rotated and left to de-contaminate for 3 or 4 days after cleaning to reduce the risk of indirect transmission 4. EYFS resources will be cleaned daily and deep cleaned at the end of each week. 5. Soft furnishings and soft / cloth toys will be removed from use in classrooms if they cannot be cleaned effectively (in the school's washing machine). 6. Deep cleaning of school at the end of each week. 7. No other staff will touch the equipment used by the cleaner. This will be labelled for their own use. 8. Plastic resources to be washed in the school dishwasher. 9. Non removable fabric to be cleaned with upholstery/ carpet cleaner. 			
Remaining level of risk		Consider level of risk following use of control measures	
HIGH	MEDIUM	LOW 24/02/21	NEGLIGIBLE

<u>Identify hazard</u>			
Risk of illness of vulnerable staff and family members through direct and indirect transmission of the virus			
<u>Existing level of risk</u>			
HIGH	MEDIUM	LOW	NEGLIGIBLE
<u>Control measures</u>			
7 – Wear PPE when necessary			
<ol style="list-style-type: none"> 1. Those who are clinically extremely vulnerable cannot attend school at this time to and work with children or adults. 			



St Leonard's CE First School - HEALTH & SAFETY

Remaining level of risk		Consider level of risk following use of control measures	
HIGH	MEDIUM	LOW 24/02/21	NEGLIGIBLE

Identify hazard
Emotional distress/ anxiety of parents

Existing level of risk			
HIGH	MEDIUM	LOW	NEGLIGIBLE

Control measures
<ol style="list-style-type: none"> 1. Parents to be consulted fully regarding plans to fully open the school. 2. Parents to be given as much information as possible regarding the measures taken to keep their children safe. 3. Make parents aware of attendance expectations, that they no longer have a choice and may not be fined for non-attendance. 4. Online Home/school agreement to be signed by parents to ensure they understand the risks to their children and their responsibilities in order to protect the school community. 5. Reassure parents that the home education provision will continue to go ahead should there be a further lockdown or their child has to self-isolate. 6. Website to be used as a hub for well-being support. 7. Breakfast club for working parents. 8. Altered pick up and start times to support families.

Identify hazard
Risks of the use of alcohol-based hand gel (sanitiser) Swallowing/ inhaling Slips on floors Skin irritation Allergic reaction

Existing level of risk			
HIGH	MEDIUM –	LOW 24/02/21	NEGLIGIBLE



St Leonard's CE First School - HEALTH & SAFETY

Control measures

1. Sanitiser stations supervised by school staff.
2. Visitor signage to apply hand gel before entering the school.
3. Additional hand gel stations in the hall.
4. Pupils instructed to use one blob only and massage until dry.
5. Pupils instructed not to put their hands in their mouths.
6. Notices next to all hand gel stations
7. First aiders alerted to remedial actions – if a child swallows gel.
8. Incidents and near misses to be reported.
9. School to have a supply of individual eye wash solutions.
10. Paper towels located near to hand sanitiser to allow prompt clean up of spillages.
11. Parents told not to let their children bring their own hand sanitiser to school.

Identify hazard

Early Years Foundation Stage – Contamination of resources leading to COVID-19 transmission

Existing level of risk

HIGH	MEDIUM	LOW 24/02/21	NEGLIGIBLE
------	--------	-----------------	------------

Control measures

1. EYFS cleaning regime established
2. Timetable to allow staff time to carry out cleaning regime.
3. Education of children around only using resources which have been cleaned.
4. Rules of no toys in mouths.
5. No shared messy play activities – each child to have their own washing up bowl for this.
6. Reading area is a surface that can be cleaned easily (bath)
7. Water tray is soapy water with antibacterial soap, changed daily and deep cleaned weekly.
8. Toys are washed in nets in the dishwasher
9. Any soft toys or furnishings used are washed in the washing machine on a hot wash.
10. Hand washing/ sanitiser is encouraged between transition of activities.

Identify hazard

Music lessons with peripatetic teacher – Risk of transmission of COVID-19 via singing, use of instruments and visiting teacher

Existing level of risk

HIGH	MEDIUM	LOW	NEGLIGIBLE
------	--------	-----	------------



St Leonard's CE First School - HEALTH & SAFETY

24/02/21

Control measures

1. Hall area to be used for the teaching of music to increase ventilation and to keep visiting teacher separate from the rest of the school.
2. Hall windows and doors to be opened to increase ventilation.
3. Teacher to use laptop and projector in hall for lessons which will be cleaned by her after use.
4. Visiting teacher to use portable handwashing station in the hall so that children do not have to enter and exit to wash their hands regularly.
5. Visiting teacher to be given cleaning supplies of Milton spray and clean cloth on entry to school to use to clean as they go.
6. Visiting teacher to be given a walkie talkie for communication with other staff.
7. Children to bring their individual stationary bags and chairs into the hall with them from their classroom.
8. Storage for guitars to be improved to prevent cross contamination. Guitars to be stored on racks.
9. Visiting to wash hands in between tuning guitars.
10. Children to learn how to clean their own guitar.
11. Singing to be done in line with risk assessment from the music service (quiet chanting, short bursts of singing spaced 3m apart and outdoor singing where possible).
12. Visiting teacher will clean in between groups although will only be teaching children in the same bubble.
13. EYFS to be taught music by their class teacher.
14. A limited selection of instruments that can easily be washed to be used (e.g recorders, ocarinas, triangles).

Identify hazard

PE lessons with sports coaches– Risk of transmission of COVID-19 via use of equipment and visiting teacher

Existing level of risk

HIGH	MEDIUM	LOW 24/02/21	NEGLIGIBLE
------	--------	-----------------	------------

Control measures

1. Visiting coach to wear a mask when in contact with vulnerable staff.
2. Visiting coach to attend school in clean uniform if they have come from another school.
3. Consistent coach to be provided by ASM sports company.
4. Sports equipment is cleaned meticulously in between bubble groups.
5. PE lessons take place outdoors where the weather is suitable.
6. All children come to school in PE kit on PE days to prevent changing clothing in school.



St Leonard's CE First School - HEALTH & SAFETY

7. All pupils come in warm clothing suitable for outdoors.
8. Where the hall is used, activities are altered accordingly.
9. All windows and doors are opened in the hall to promote ventilation.
10. Activities with less risk to be taught at the start of the year.
11. Gymnastics taught with additional risk assessment using a small base of equipment.
12. Physical distancing within lessons is encouraged.
13. Contact sports are to be avoided at this time.
14. Emphasis on skills and personal fitness in PE lessons.
15. Children to wash their hands before and after PE lessons.

Identify hazard

Process of Staff carrying out Lateral Flow Device Tests at home

- Biological hazards of conducting the test
- Infection of Tester from air borne particles/ contaminated surfaces
- Cross contamination of other family members from used testing materials
- Incorrect logging of results resulting in risk of infection
- Lack of testing equipment creating an increased risk of infection in school
- Staff continue to work due to a false negative test result

Existing level of risk

HIGH	MEDIUM	LOW	NEGLIGIBLE
------	--------	-----	------------

Control measures

1 – Minimise contact with individuals who are unwell.

1. Office Manager to record how many tests are available to staff. New tests should be ordered within an appropriate timescale.
2. Office Manager will ensure that all staff sign for their test kits and record the LOT number.
3. Office Manager should carry out routine checks to ensure that the correct procedure continues to be followed.
4. Test kits to be stored and managed by the office manager in line with the DfE storage guidelines.
5. All members of staff to watch an instructional video about self-administering tests.
6. All staff who take tests will receive a guidance sheet and staff handbook.
7. All staff to test on Tuesday and Saturday evenings.
8. Tests to take place before 7.30pm so that parents can be informed of the impact on the school by 8pm.
9. Tester to wash hands prior to and after testing.
10. All surfaces to be wiped down before and after testing.
11. Testing waste to be disposed of immediately following tests.
12. Double bag all **POSITIVE** test waste materials and place in household waste.
13. Single bag all **NEGATIVE** test waste materials and place in the household waste.
14. The member of staff will record the result on the NHS Test and Trace website.
15. Record of tests to be kept by covid co-ordinator on a format containing; name, date, time, result, comments, action taken after a positive test.
16. Staff members receiving a **VOID** test should repeat the test. If this comes back VOID they should arrange a PCR Test and inform the Covid co-ordinator.



St Leonard's CE First School - HEALTH & SAFETY

Remaining level of risk		Consider level of risk following use of control measures	
HIGH	MEDIUM	LOW 24/02/21	NEGLIGIBLE

Identify hazard
Children/ staff showing symptoms in school

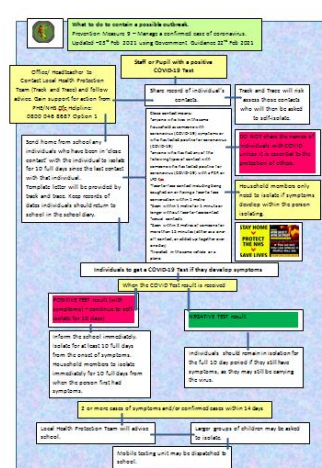
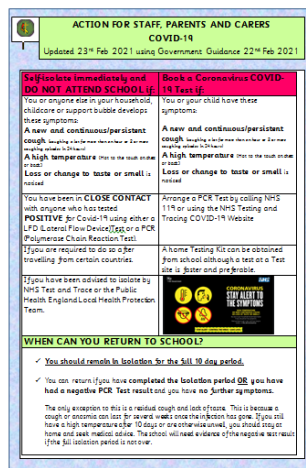
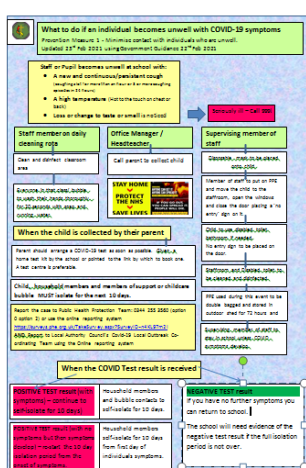
Existing level of risk			
HIGH	MEDIUM	LOW	NEGLIGIBLE

Control measures
1 – Minimise contact with individuals who are unwell.
5 – Enhanced cleaning regime
7 – Where necessary wear PPE
8-10 – Manage a confirmed case of COVID-19

Staff working in school will carry out a Lateral Flow Device (LFD) Covid-19 Test twice each week and results reported. A member of staff with a positive test will gain a PCR test and the school bubble will isolate until that is received.

Flowcharts of actions below will be followed should an individual become ill in school or a positive case be confirmed.

Temperatures of staff and children will be taken on arrival. A temperature of 37.8 or higher will result in the individual being sent home.



Remaining level of risk		Consider level of risk following use of control measures	
HIGH	MEDIUM 24/02/21	LOW	NEGLIGIBLE



St Leonard's CE First School - HEALTH & SAFETY

OVERALL level of risk		Consider level of risk following use of control measures	
HIGH	MEDIUM 24/02/21	LOW	NEGLIGIBLE
Assessor's comments			
<p>The school community is now well versed in Health and Safety mitigation measures following the periods of two school closures. Parents wearing face coverings is now a culture within the school which is greatly reducing the risks on arrival and collection.</p> <p>Pupils having their temperatures checked on arrival to school as a precautionary measure is supporting us to preserve the staffing in our very small school.</p> <p>Our previous measures have worked successfully as our risk assessment has evolved and we have made minor alterations before the second full school opening.</p> <p>School staff are now carrying out Lateral Flow Device Testing twice each week, further reducing the risk of spreading the virus. They continue to wear a uniform and are given PPE for their protection and to prevent cross-contamination.</p> <p>Rates of infection remain high so all school staff will be expected to adhere strictly to Health and Safety measures and will be strongly advised to wear both a face covering and a visor when working closely with children in small groups or 1-1. The latest guidance suggests that a visor is not sufficient on its own.</p> <p>Pregnant and shielding staff are working from home. Work has been done to ensure that their work at home supports those working in school to carry out their challenging roles in order to reduce anxiety and stress for these staff.</p> <p>The decision has been taken to operate as one bubble due to the small size of the school, the absence of two members of staff and the feasibility of providing a 'full' education. This decision also supports the well-being of the whole school community as they recover from the trauma of this isolation period.</p> <p>The school can remain as one bubble due to the strong culture of hygiene and protecting each other's safety which will keep the risk of transmission of COVID-19 low.</p> <p>Any symptoms or positive cases of COVID will be rigorously managed using clear flowcharts produced by the school to ensure that any cases do not spread.</p> <p>Rules surrounding isolation periods will be made explicitly clear to parents via a video from the Headteacher in addition to a letter to ensure that they are fully understood.</p>			

Name of assessor	Signature of assessor	Date
Mrs Kelly Stanesby	<i>K. Stanesby</i>	24 th Feb 2021

Risk assessment reviews	15 th March 2021
--------------------------------	-----------------------------