



**Curiosity Tasks  
with Sparks class**



**Our topic is called  
‘bright lights, big city’.**







**This week is all  
about the Art  
Galleries in  
London**



# Curiosity Task 3

## 1. I can learn about the National Art Gallery in London.





**2. I can learn about the Artist 'Miro' whose work is in the Tate Gallery.**

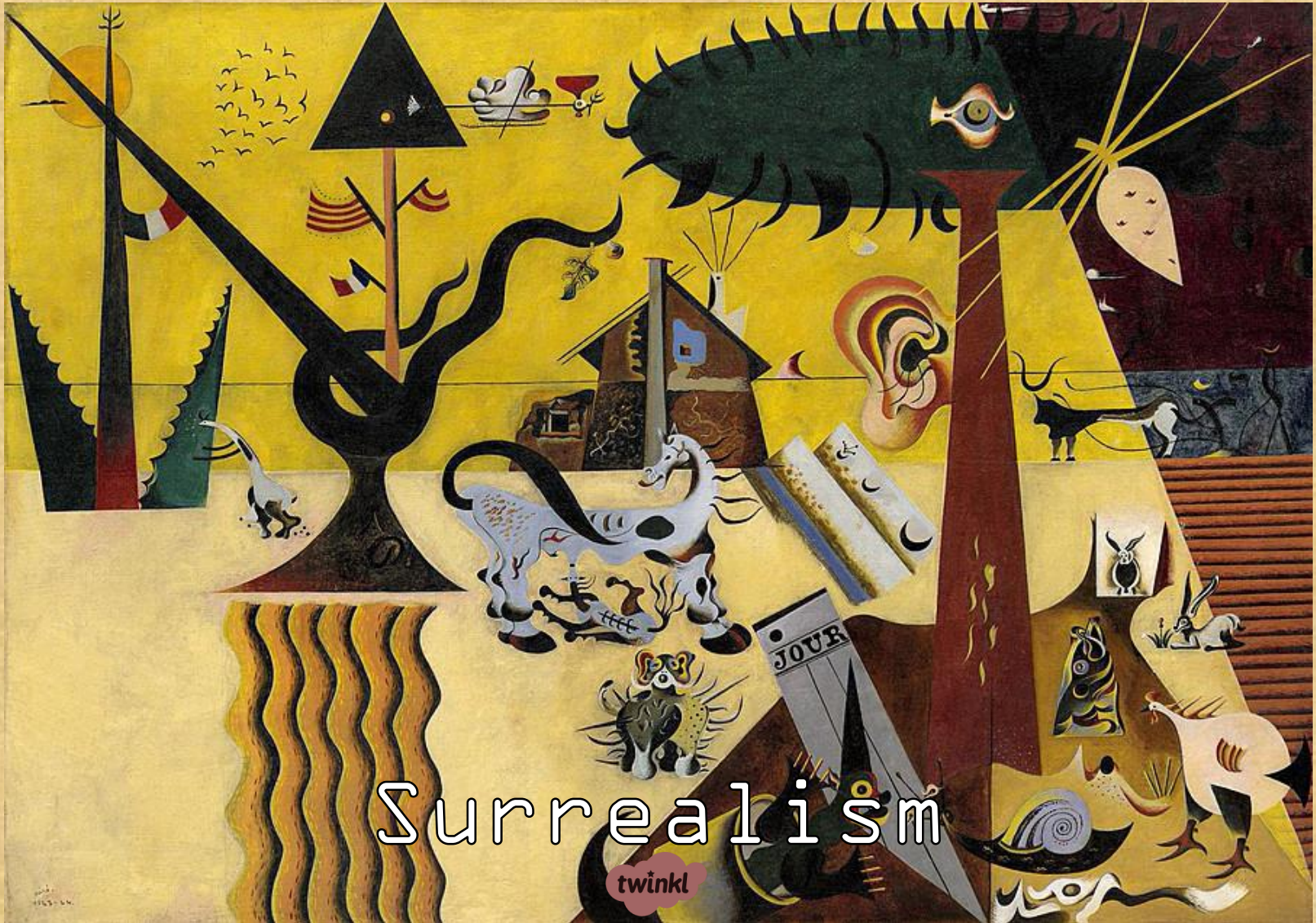




Watch this video about the work of  
Joan Miro







Surrealism

twinkl

Photo courtesy of <http://www.guggenheim.org/new-york/collections/collection-online/artwork/2934>

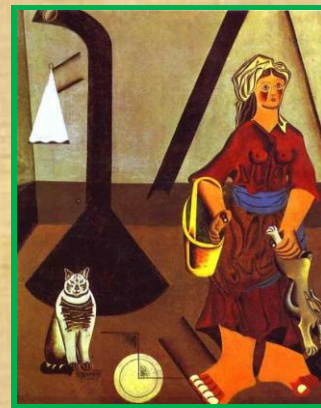
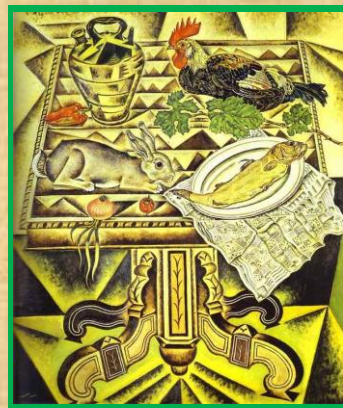


# Magical Realism

Joan Miró was a Spanish Catalan artist, born in Barcelona in 1893.

From 1920, Miró painted in a Magical Realist style. He painted carefully, and made things look quite realistic. Some parts of these paintings seem slightly strange or unusual.

These paintings feel almost real, but as if something is not quite right. This creates a feeling that the paintings are magical, or like a dream.



\*Photo courtesy of <http://www.joan-miro.net/the-table.jsp> and <http://www.abcgallery.com/R/miro/miro37.html>



# Magical Realism

We looked at Miró's painting, 'The Farm'.

'The Farm' was painted in a Magical Realist style. It includes lots of carefully painted different elements.

Each individual item is painted in detail, and seems realistic whilst some of the things seem too big or too small.

The painting seems almost realistic, but also slightly magical.



The Farm, 1922



# Surrealism

## Miro's Surrealist Paintings

In 1922, Joan Miró began exploring Surrealism in his paintings. He began painting in a more abstract style.

This meant that the things he painted were less realistic, and might not look exactly like they do in real life.

He started using strong colours, such as black, red, yellow, green and blue and painted shapes and lines in his artworks.

The Tilled Field





# Surrealism

Some shapes are geometric, such as triangles and squares.

They have a certain number of edges, corners and faces.

Some shapes are organic.

These shapes are irregular.

An example of an organic shape is a leaf or a puddle.





# The Tilled Field, 1923 - 24



What can you see in this painting? What do you notice about the animals?



Photo courtesy of <http://www.guggenheim.org/new-york/collections/collection-online/artwork/2934>

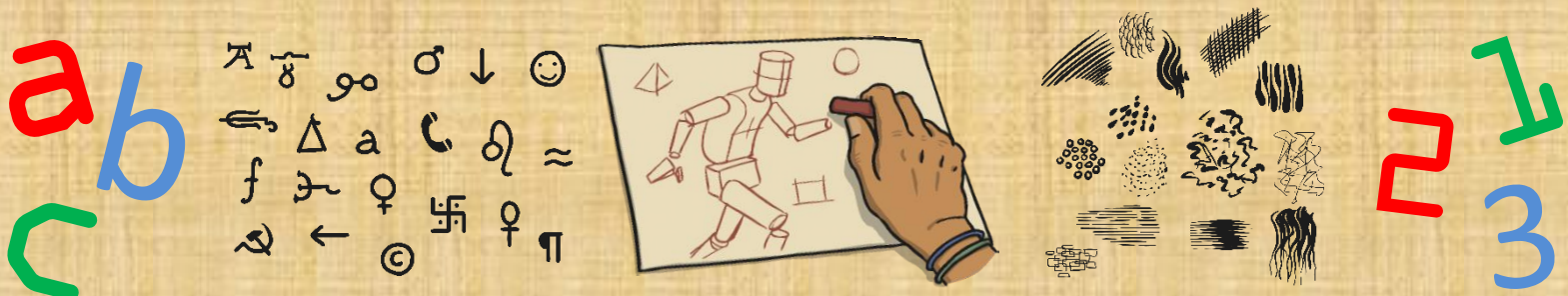


# Surrealist Pictorial Language

Miró used lots of symbols in his Surrealist paintings. He began to use letters and numbers in his art.

He drew different types of line: straight, curved, vertical, horizontal, diagonal, wiggly, zigzag, spiral, and dotted. His paintings began to include fewer people and animals.

When he did paint people, they were simplified, and he created them using shapes and symbols. Miró often used ideas from his dreams to inspire his art.





# Surrealist Pictorial Language

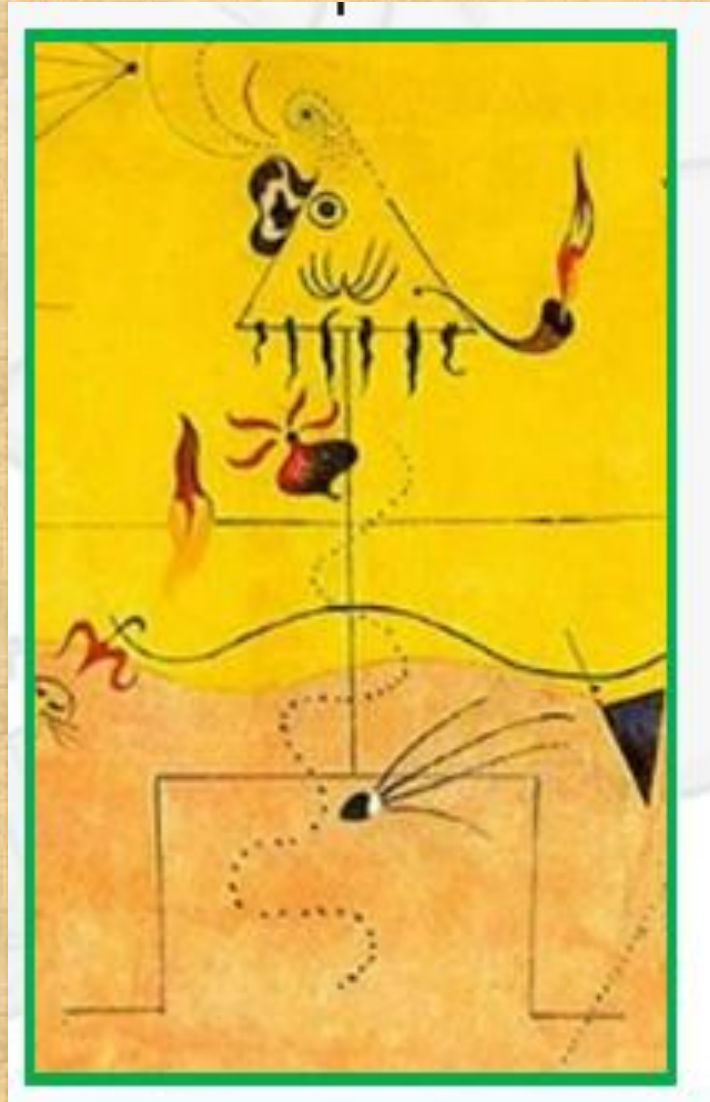
## What Shapes Do You See?



Draw, or write the names of, the shapes you can see in the picture.  
Can you spot any letters?

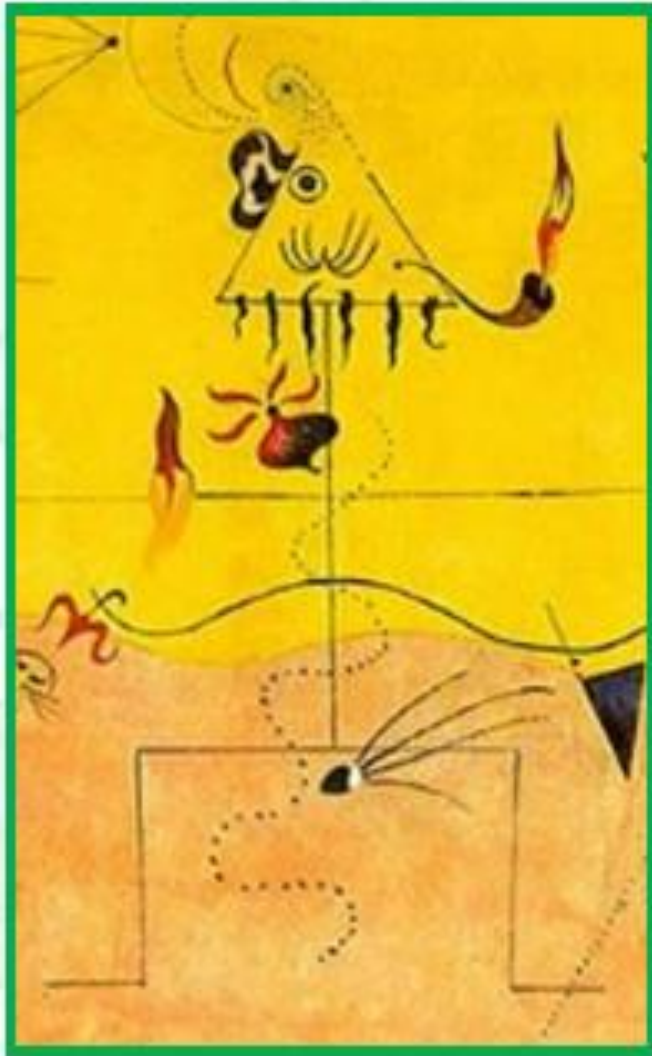


What do you think this is?





# It is a person!



Miró used a triangle to create the hunter's head.

He used straight lines to create his body, arms and legs.

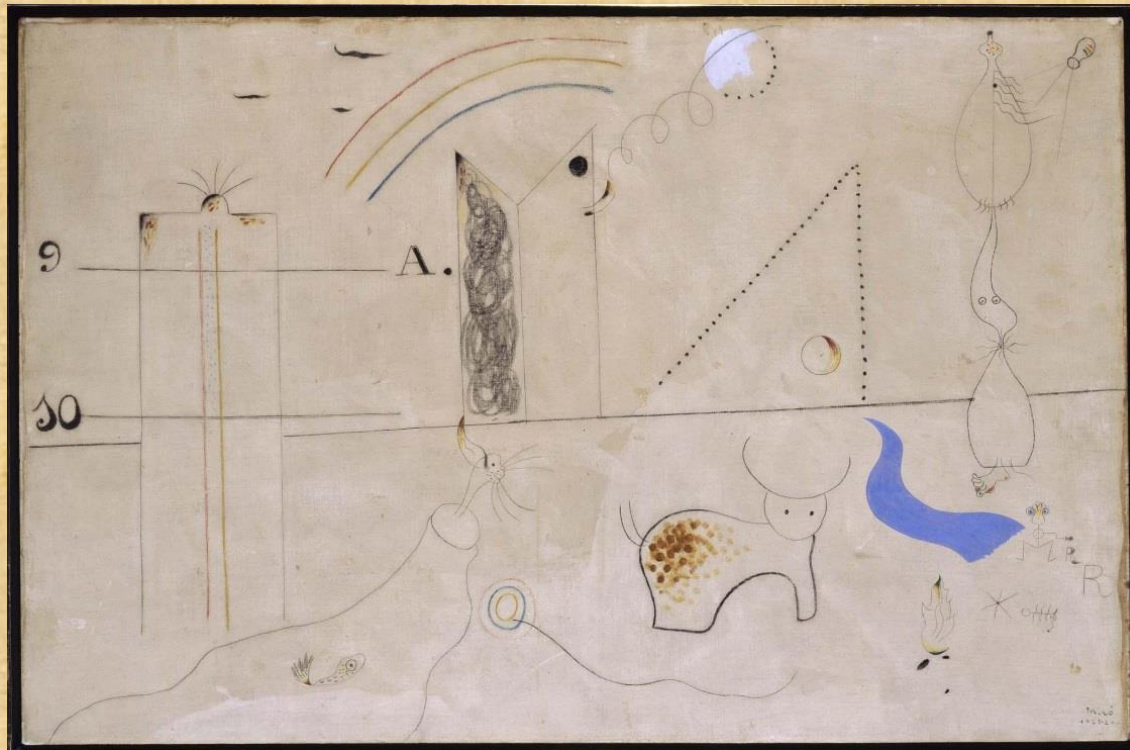
He used curved lines to make a moustache and hair for the hunter.

Which facial features can you spot?



# Surrealist Pictorial Language

## Pastorale, 1923 - 24



Draw or write the different types of lines that you can see in this picture. Find the cow. What type of line has Miró used to draw the cow?



# Harlequin's Carnival, 1924 - 25

A harlequin is a comedy character from pantomimes.

A harlequin would usually wear a diamond pattern on their costume and they sometimes played a musical instrument.

Can you spot somebody who might be the harlequin in Miró's painting?

Remember, he might not look like this in the painting.





# Harlequin's Carnival, 1924 - 25

## Can You Find The Harlequin?



Photo courtesy of <http://www.joan-miro.net/harlequins-carnival.jsp>



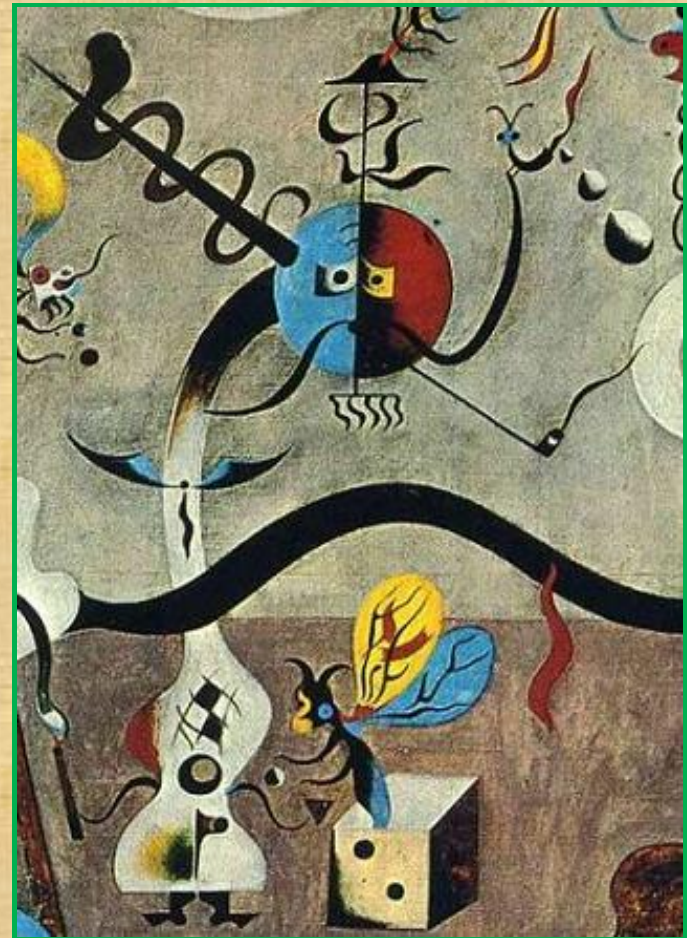
# Harlequin's Carnival, 1924 - 25

## Here He Is!

The harlequin in the painting seems very sad, even though a carnival is usually a happy event.

He has a guitar for his body, so he can probably play music.  
There is a little bit of a diamond pattern on his body, which is another clue that he is the harlequin.

It is quite hard to tell that he is a person, because he has a very long neck, and he is made up of different shapes and symbols.











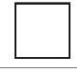












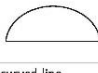


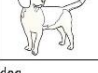





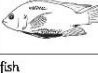

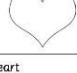

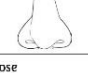



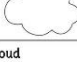





# Surrealist Picture Generator



## Surrealist Picture Generator

Use the table below to choose which combination of things to include in your Surrealist picture. Look carefully at how many items to choose from each category, and circle your choices. Then, use your imagination to draw them all together in your own Surrealist picture. Think about the colours that you will use.

Animal (Choose 2)	Object (Choose 2)	Shape (Choose 3)	Line (Choose 3)	Body Part (Choose 1)	Letter (Choose 2)
 elephant	 balloons	 triangle	 straight line	 eye	 b
 cat	 top hat	 square	 wiggly line	 hand	 e
 dinosaur	 football	 moon	 spiral	 mouth	 z
 bear	 telephone	 circle	 curved line	 ear	 f
 dog	 computer	 star	 dotted line	 foot	 s
 fish	 bicycle	 heart	 arrow	 nose	 g
 mouse	 clock	 cloud	 zigzag	 tongue	 t

We are going to make our own Surrealist pictures.

You need to use your Surrealist Picture Generator.

Use a pencil to circle the items that you are going to include in your picture.



# Creating Your Picture



Draw the items onto your page. They don't have to be perfect; maybe your elephant will have tiny feet. Or your dinosaur could have a square tummy.

Think about where you are putting each thing to create an interesting overall composition. Use the whole page.

Use black, white, yellow, red, blue and green in your picture.

Is there something else you would like to add from your own imagination?

Think about the weather, or the time of day. Do you want to add some people? Include your own ideas!



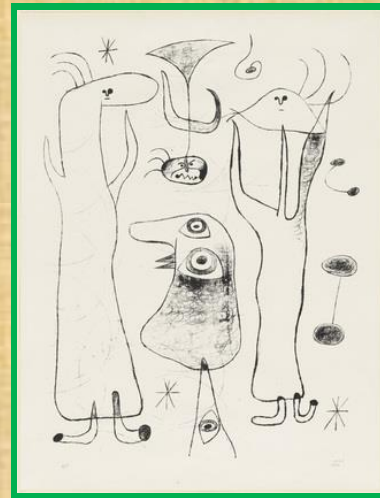


# Automatic Drawing

Miró, and other artists, created lots of their art using a technique called Automatic Drawing.

They tried to draw without thinking about what they were doing.

They wanted to draw what was in their unconscious mind.



\*Photo courtesy of: [http://www.moma.org/collection\\_images/resized/273/w600h420/CRI\\_233273.jpg](http://www.moma.org/collection_images/resized/273/w600h420/CRI_233273.jpg) and [http://c300221.r21.cf1.rackcdn.com/joan-miro-laigrette-1956-1374618566\\_org.jpg](http://c300221.r21.cf1.rackcdn.com/joan-miro-laigrette-1956-1374618566_org.jpg)



# Automatic Drawing



Close your eyes and think for one minute.

Open your eyes.

You have 3 minutes to draw whatever comes into your mind.

Don't think too much about what you are drawing, just let your ideas flow.

Now show your partner and talk about your drawing.





# Now make your own Miro picture!



- I can draw a Surrealist picture from my imagination.
- I can use simple bold colours, shapes and lines, to create a picture in the style of Joan Miró.

## Success Criteria

- I can draw 2 animals and 2 objects from my imagination.
- I can draw 1 body part in my picture.
- I can add my own details from my imagination, such as weather or people.
- I can use the colours black, blue, yellow, green, and red.
- I can draw 4 shapes and 5 lines in my picture.
- I can include 2 letters in my picture.



# Use this to help you!

## My Life - At Home



TV



DVDs



computer



laptop



games console



books



dinner



bath



bed



family



dog



cat



rabbit



hamster



goldfish

twinkl



# More activities in your pack to try

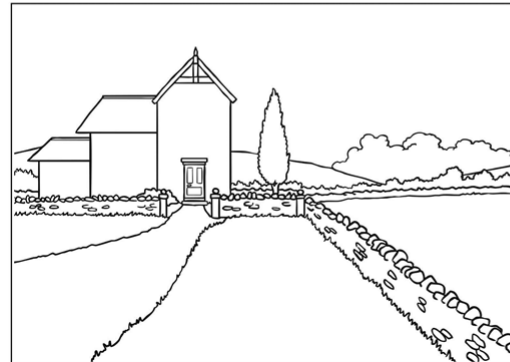
## My Surrealist Sculpture Design

I can design a Surrealist sculpture.

When you have cut out and assembled your sculpture design, stick your design together here. Then choose a different colour to colour each part of your sculpture.

## The Farm

I can draw people and objects from my memory and imagination to make a picture about me and my life.



Create your own Magical Realist picture, in the style of Joan Miró.

Complete the picture by adding objects, animals or people that are important in your life, and the things you like to do. Use bright colours, and think about making some objects too big or too small.



# Activities in your pack

## Colouring like Miró

Colour in this drawing by the famous artist Miró. Copy the example, or colour it however you like.



twinkl

Page 3 of 3

twinkl



## Sign Your Name like Miró

Miró, just like many other artists, had an original and unique signature that would stand out from the rest.

Would you like to sign your name like Miró?

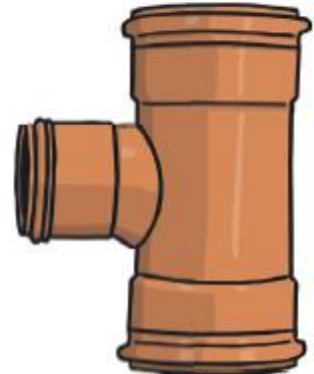
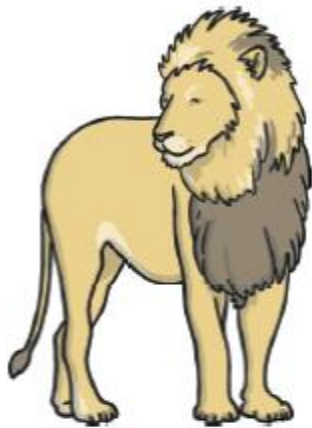
Write your name the way he did. See what you think of it!





Cut out and use these pictures, stick them onto a piece of paper to make your own surreal collage.

## Surrealist Sculpture Design Collage Images





# How to draw a Miro video

