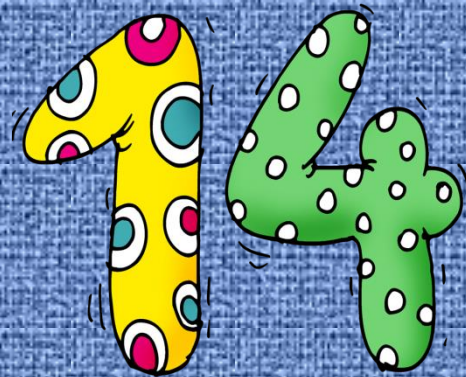


**Daily Maths with Sparks
class**

Starter activity

Can you put these three numbers in the right order from smallest to biggest? Explain your answer.





Terrific Two

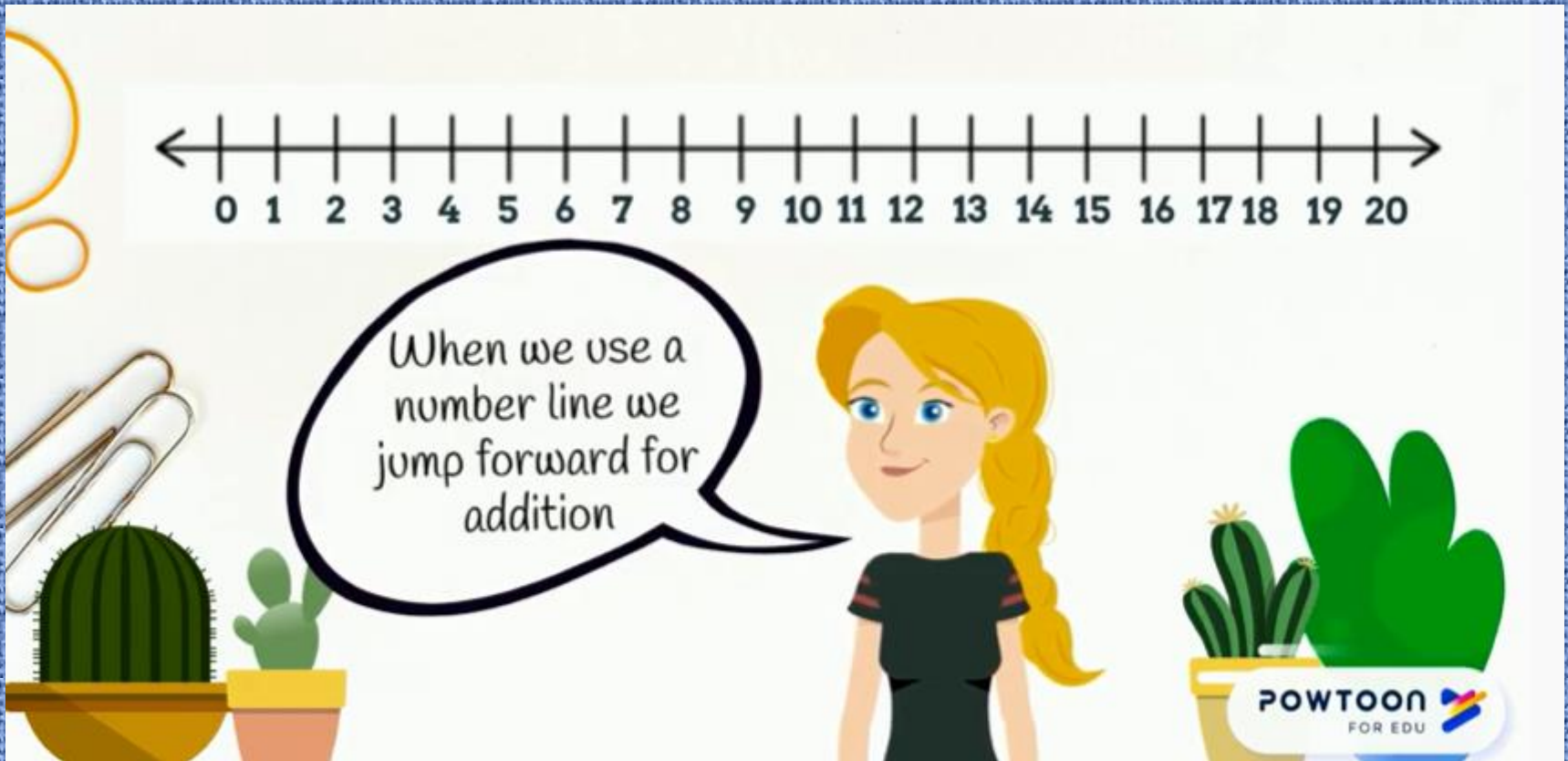
Work these out as quickly as you can.



$$2 + 2 + 2 =$$

$$15 - 4 =$$

New learning: I can add larger numbers on a number line by starting at the largest number and counting on.



New learning: I can add larger numbers on a number line by starting at the largest number and counting on.

$$8 - 3 =$$



Find the first (whole) number on the number line



0:37

Try these activities from your pack.

Addition to 30 with a number line

Example: $18 + 6 = 24$

$15 + 10 =$
 $18 + 10 =$
 $17 + 3 =$
 $16 + 8 =$
 $14 + 11 =$
 $14 + 7 =$
 $25 + 5 =$
 $23 + 6 =$

Addition to 30 with a number line

Example: $18 + 6 = 24$

$15 + 10 =$
 $18 + 10 =$
 $17 + 3 =$
 $16 + 8 =$
 $19 + 11 =$
 $14 + 7 =$

Number Line Subtraction

Example: $10 - 5 = 5$

$20 - 17 =$		$20 - 3 =$	
$12 - 4 =$		$9 - 4 =$	
$18 - 12 =$		$18 - 2 =$	
$10 - 3 =$		$10 - 6 =$	
$17 - 5 =$		$7 - 3 =$	
		$2 - 2 =$	

Number Shape Addition to 20

Use the number shapes to work out the answers to each addition question.

$10 + 10 =$
 $12 + 8 =$
 $15 + 5 =$
 $18 + 2 =$
 $14 + 6 =$
 $16 + 4 =$
 $19 + 1 =$
 $11 + 9 =$
 $13 + 7 =$
 $17 + 3 =$
 $14 + 6 =$

ink saving Eco

ink saving Eco

Try playing the addition to 10 and 20 and subtraction to 20 games. Have a number line in front of you to help..

Funky Mummy

- Bonds of 10
- + up to 10
- missing number all one digit
- Bonds of 20
- + up to 20
- up to 20
- add 3 numbers
- bonds of 100 (multiples of 10)
- bonds of 100
- halves up to 10
- halves up to 20
- halves (multiples of 10)
- doubles up to 10 + 10
- doubles 10 to 20
- doubles (multiples of 10)
- times tables